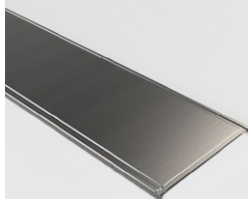
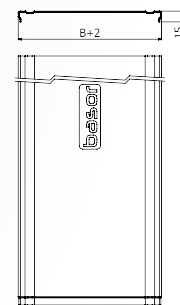


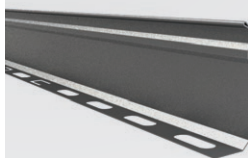
## VL-1B Víko žlabu



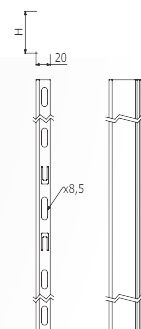
| označení  | B [mm] | L [mm] | objednací kód |              |       |
|-----------|--------|--------|---------------|--------------|-------|
|           |        |        | SZ            | ZZ           | A2/A4 |
| VL-1B 50  | 50     | 3 000  | ARB-14710105  | ARB-12710106 | ☎     |
| VL-1B 100 | 100    | 3 000  | ARB-14710305  | ARB-12710306 |       |
| VL-1B 150 | 150    | 3 000  | ARB-14710505  | ARB-12710506 |       |
| VL-1B 200 | 200    | 3 000  | ARB-14710606  | ARB-12710606 |       |
| VL-1B 300 | 300    | 3 000  | ARB-14710806  | ARB-12710807 |       |
| VL-1B 400 | 400    | 2 000  | ARB-14710907  | ARB-12710907 |       |
| VL-1B 500 | 500    | 2 000  | ARB-14711008  | ARB-12711008 |       |



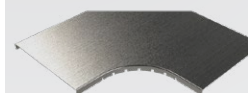
## KPL-B Kabelová přepážka



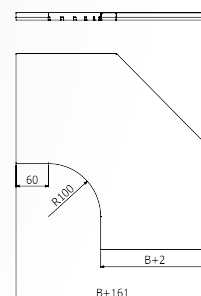
| označení  | B [mm] | H [mm] | L [mm] | objednací kód |              |       |
|-----------|--------|--------|--------|---------------|--------------|-------|
|           |        |        |        | SZ            | ZZ           | A2/A4 |
| KPL-B 35  | 20     | 35     | 3 000  | ARB-14713007  | ARB-12713007 | ☎     |
| KPL-B 60  | 20     | 60     | 3 000  | ARB-14713207  | ARB-12713207 |       |
| KPL-B 100 | 20     | 100    | 2 000  | ARB-14713407  | ARB-12713407 |       |



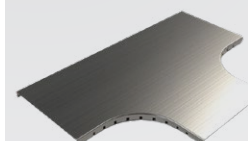
## VKL-1B Víko kolena žlabu



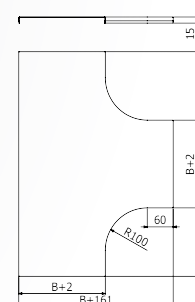
| označení              | B [mm] | objednací kód |              |       |
|-----------------------|--------|---------------|--------------|-------|
|                       |        | SZ            | ZZ           | A2/A4 |
| VKL-1B 90° [R100] 100 | 100    | ARB-14720103  | ARB-12720103 | ☎     |
| VKL-1B 90° [R100] 150 | 150    | ARB-14720105  | ARB-12720105 |       |
| VKL-1B 90° [R100] 200 | 200    | ARB-14720106  | ARB-12720106 |       |
| VKL-1B 90° [R100] 300 | 300    | ARB-14720108  | ARB-12720108 |       |
| VKL-1B 90° [R100] 400 | 400    | ARB-14720109  | ARB-12720109 |       |
| VKL-1B 90° [R100] 500 | 500    | ARB-14720110  | ARB-12720110 |       |



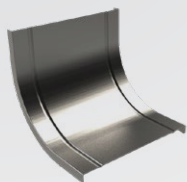
## VTL-1B Víko T-kusu žlabu



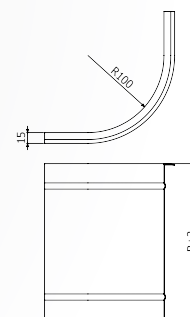
| označení          | B [mm] | objednací kód |              |       |
|-------------------|--------|---------------|--------------|-------|
|                   |        | SZ            | ZZ           | A2/A4 |
| VTL-1B (R100) 100 | 100    | ARB-14810103  | ARB-12810103 | ☎     |
| VTL-1B (R100) 150 | 150    | ARB-14810105  | ARB-12810105 |       |
| VTL-1B (R100) 200 | 200    | ARB-14810106  | ARB-12810106 |       |
| VTL-1B (R100) 300 | 300    | ARB-14810108  | ARB-12810108 |       |
| VTL-1B (R100) 400 | 400    | ARB-14810109  | ARB-12810109 |       |
| VTL-1B (R100) 500 | 500    | ARB-14810110  | ARB-12810110 |       |



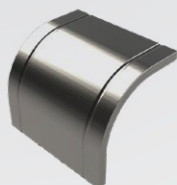
## VKSL-1B Víko kolena žlabu stoupajícího



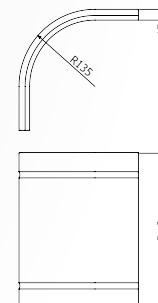
| označení           | B [mm] | objednací kód |              |       |
|--------------------|--------|---------------|--------------|-------|
|                    |        | SZ            | ZZ           | A2/A4 |
| VKSL-1B (R100) 100 | 100    | ARB-14790103  | ARB-12790103 | ☎     |
| VKSL-1B (R100) 150 | 150    | ARB-14790105  | ARB-12790105 |       |
| VKSL-1B (R100) 200 | 200    | ARB-14790106  | ARB-12790106 |       |
| VKSL-1B (R100) 300 | 300    | ARB-14790108  | ARB-12790108 |       |
| VKSL-1B (R100) 400 | 400    | ARB-14790109  | ARB-12790109 |       |
| VKSL-1B (R100) 500 | 500    | ARB-14790110  | ARB-12790110 |       |



## VKKL-1B Víko kolena žlabu klesajícího



| označení           | B [mm] | objednací kód |              |       |
|--------------------|--------|---------------|--------------|-------|
|                    |        | SZ            | ZZ           | A2/A4 |
| VKKL-1B (R100) 100 | 100    | ARB-14800103  | ARB-12800103 | ☎     |
| VKKL-1B (R100) 150 | 150    | ARB-14800105  | ARB-12800105 |       |
| VKKL-1B (R100) 200 | 200    | ARB-14800106  | ARB-12800106 |       |
| VKKL-1B (R100) 300 | 300    | ARB-14800108  | ARB-12800108 |       |
| VKKL-1B (R100) 400 | 400    | ARB-14800109  | ARB-12800109 |       |
| VKKL-1B (R100) 500 | 500    | ARB-14800110  | ARB-12800110 |       |



## VTLL-1B Víko T-kusu LIGHT



| označení           | B [mm] | objednací kód |              |       |
|--------------------|--------|---------------|--------------|-------|
|                    |        | SZ            | ZZ           | A2/A4 |
| VTLL-1B (R100) 100 | 100    | ARB-14830103  | ARB-12830103 | ☎     |
| VTLL-1B (R100) 150 | 150    | ARB-14830105  | ARB-12830105 |       |
| VTLL-1B (R100) 200 | 200    | ARB-14830106  | ARB-12830106 |       |
| VTLL-1B (R100) 300 | 300    | ARB-14830108  | ARB-12830108 |       |
| VTLL-1B (R100) 400 | 400    | ARB-14830109  | ARB-12830109 |       |
| VTLL-1B (R100) 500 | 500    | ARB-14830110  | ARB-12830110 |       |

